

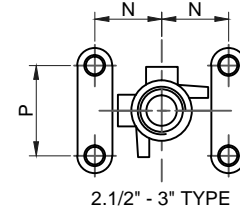
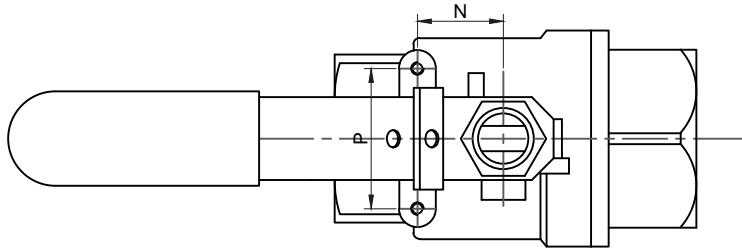
DRG No.

IF IN DOUBT ASK

ALL DIMENSIONS IN MILLIMETRES UNLESS STATED

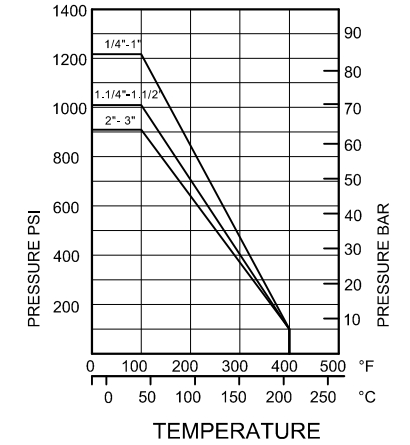
DO NOT SCALE

SIZE		d	L	H	W	N	P	Cv FACTOR	WEIGHT Kg	TORQUE Nm
DN	NPS									
8	1/4"	11.6	52	56	102	12.7	28.5	6.0	0.28	3
10	3/8"	12.7	52	56	102	12.7	28.5	7.0	0.23	3
15	1/2"	15	58	65	123	12.7	28.5	10	0.34	4
20	3/4"	20	67	68	123	21	35	25	0.50	7.5
25	1"	25	78	79	153	21	35	35	0.68	10
32	1.1/4"	32	90	84	153	23.5	38	46	1.12	12
40	1.1/2"	40	104	93	183	23.5	38	80	1.84	15
50	2"	50	127	99	183	23.5	38	110	2.98	25
65	2.1/2"	65	158	136	246	35	54	310	5.17	38
80	3"	80	187	146	246	35	54	360	9.92	72



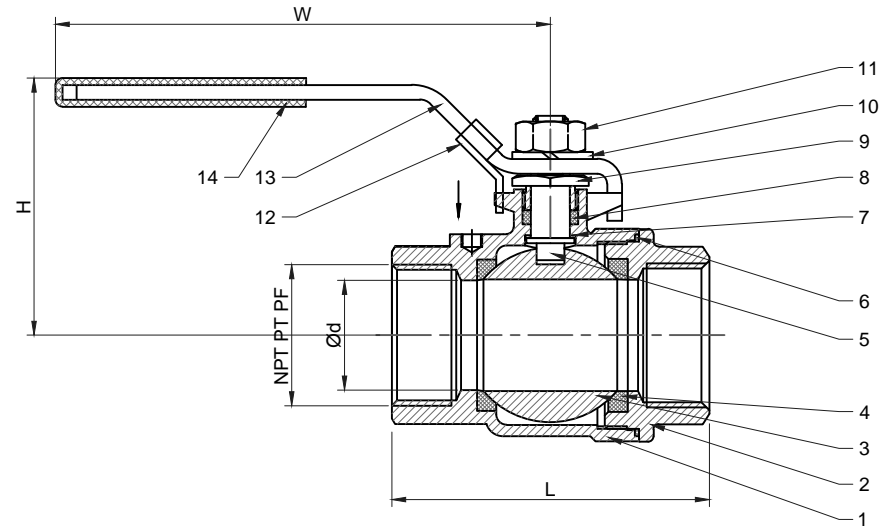
PRESSURE-TEMPERATURE

RATING 1/4" - 3"



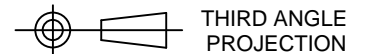
FEATURES:

- PIPE THREAD IN ACCORDANCE:NPT,BSPT,DIN259, DIN2999,ISO228 CLASS A
- BLOW-OUT PROOF STEM/FULL PORT
- INVESTMENT CASTING BODY
- 1000PSI(PN63)W.O.G.
- LOCKING DEVICE
- MATERIAL:S45C/ASTM A216Gr-WCB/DIN1.0619 SS316/ASTM A351Gr-CF8M/DIN1.4408



REV	DATE	DESCRIPTION OF REVISION	SIGN

ITEM	DESCRIPTION	QTY	MANUFACTURER / REF	MATERIAL
1	BODY			WCB/CF8M
2	CAP			WCB/CF8M
3	BALL			CF8M
4	SEAT			PTFE
5	STEM			SS316
6	GASKET			PTFE
7	THRUST WASHER			PTFE
8	PACKNIG			PTFE
9	GLAND			SS304
10	SPRING WASHER			SS304
11	STEM NUT			SS304
12	LOCKING DEVICE			SS304
13	HANDLE			SS304
14	HANDLE COVER			PLASTIC



THIRD ANGLE PROJECTION

DESCRIPTION:

**EUROTORC MODEL EV 201
TWO PIECE FULL PORT
STAINLESS STEEL
BALL VALVE PN63**

EUROTORC
sales@eurotorc.com
www.eurotorc.com



DRAWN SMP
DATE 02/09/15
APPROVED

THIS DRAWING IS THE PROPERTY OF EUROTORC AND MUST NOT BE COPIED, LENT OR USED IN PART OR IN WHOLE WITHOUT WRITTEN CONSENT.